



justObserve

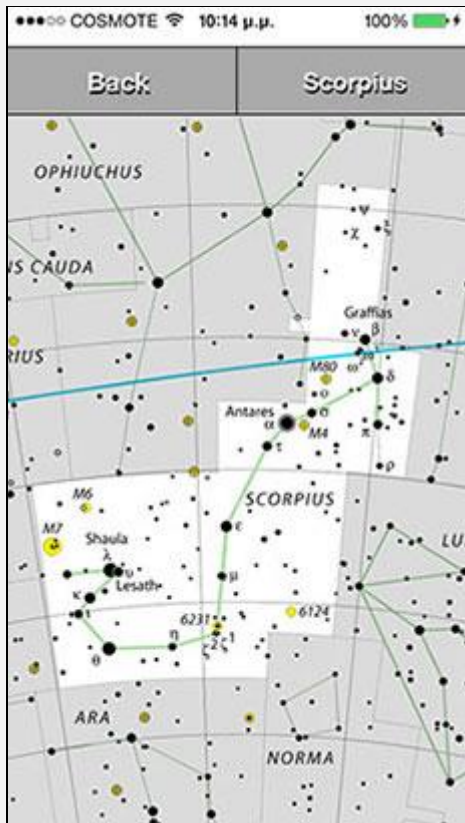
user's manual



The intro screen presents a list of all 88 modern constellations with their Latin name and English translation.



By tapping on the icon at right, a star map thumbnail is shown for the constellation of interest as well as some statistics on the deep sky objects that can be observed.



By tapping on the map thumbnail of the constellation, a full screen version is shown. Some basic zoom in/out and panning is possible to aid in exploring the most important stars and deep-sky objects.

Spiral Galaxies		NGC	IC
		52	31
Elliptical Galaxies		NGC	IC
		11	3
Irregular Galaxies		NGC	IC
Irr. P C		0	1
Emission Nebulae			

By selecting “By Type” in the constellation list and tapping on a name, a scrollable table is shown with the number of NGC/IC objects for each type of objects in the constellation. The user can then tap on the grey button dedicated to each type to view a list of object members.



The list includes for each object, a photo downloaded from NASA SkyView server as well as coordinates, magnitude and size to help the user get some idea about the properties of the object. Furthermore, the objects can be sorted by name, magnitude and size to aid in quick identification of interesting targets.




As a result of “swiping” towards right on the thumbnail a resized version of the photo is displayed. Any common name and Messier catalogue membership is also indicated for the object.



By selecting “All Objects” at the top of the constellation list and tapping on a constellation name a list of objects is displayed grouped according to object type. The same information and sorting methods are available as described before.



By tapping on an object in the list, a new screen appears with much more information for the object, divided into three sections. The “Object Data” section displays information such as coordinates, magnitude, size, surface brightness, position angle, BV magnitude, distance and more.

COSMOTE 8:43 p.m. 87%	
Galaxy	Type: SBc
BV Mag: 0.6	Z: 0.00 (15.32 Mpc)
B-mag: 10.1	PGC: 27978
Observing Notes - (by S. Gottlieb)	
NGC - 2997 1/3	
<p>24 (4/10/08 - Magellan Observatory, Australia): at 215x, this beautiful, asymmetric face-on spiral extended ~7'x4.5' and was sharply concentrated with a very bright 40 core. The spiral structure is unusual with a very long, relatively thick arm that curves from west to east on the north side of the core. This arm then bends south on the east side and contains a very faint 20 Hill knot situated northeast of the core [1.6' from center] and symmetrically placed opposite a mag 12 star in the outer halo on the SW side. This Hill region is identified in NED as NGC 2997:[MM 81] 306, from the 1981 paper Morphology and Kinematics of</p>	
NASA SkyView Photo	
	

The “Observing Notes” section includes up to 5 different observing notes by acclaimed observer Steve Gottlieb. (All NGC and many IC objects are covered).

COSMOTE 8:43 p.m. 87%	
Galaxy	Type: SBc
BV Mag: 0.6	Z: 0.00 (15.32 Mpc)
B-mag: 10.1	PGC: 27978
Observing Notes - (by S. Gottlieb)	
NGC - 2997 2/3	
<p>A second fainter outer arm running roughly SW to NE also wraps around the galaxy on the west and north side but at further distance from the core. This outer arm nearly reaches a mag 12 star on the southwest side (the one opposite the knot mentioned above) and then can be followed with more difficulty to the east where it attaches on the south side of the core.</p>	
NASA SkyView Photo	
	

By “swiping” right or left reveals a different description.

Marcelin in A&A, 95, 99. A mag 14.5 star is near the end of this arm and due east of the core. To the west of the end of this arm the light level noticeably dips (this is a gap between the arms) as well as on the southeast side of the halo, giving an asymmetric appearance.

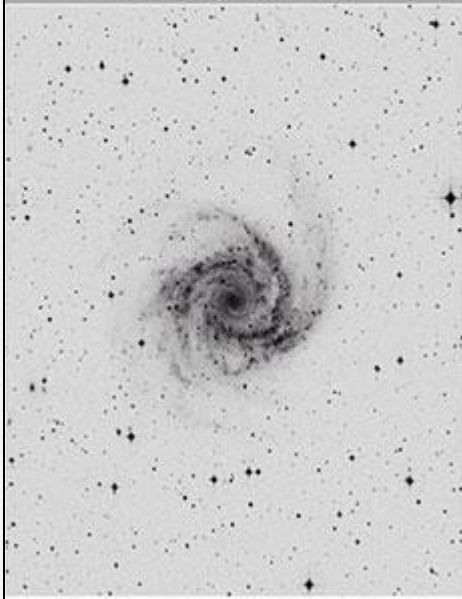
NASA SkyView Photo



The “SkyView Photo” section displays a big photo of the object, downloaded from internet. Some basic zoom in/out and panning is possible.

Marcelin in A&A, 95, 99. A mag 14.5 star is near the end of this arm and due east of the core. To the west of the end of this arm the light level noticeably dips (this is a gap between the arms) as well as on the southeast side of the halo, giving an asymmetric appearance.

NASA SkyView Photo



Tapping on the previous photo reveals an inverted version.

Marcellin in AKA, 95, 99. A mag 14.5 star is near the end of this arm and due east of the core. To the west of the end of this arm the light level noticeably dips (this is a gap between the arms) as well as on the southeast side of the halo, giving an asymmetric appearance.

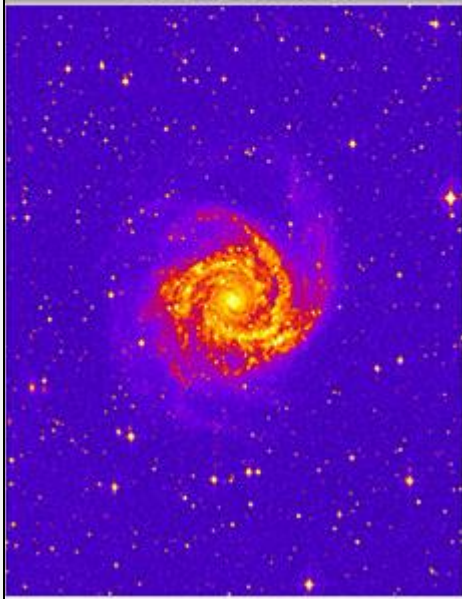
NASA SkyView Photo



Tapping on the previous photo reveals a version with a coordinate's grid.

Marcellin in AKA, 95, 99. A mag 14.5 star is near the end of this arm and due east of the core. To the west of the end of this arm the light level noticeably dips (this is a gap between the arms) as well as on the southeast side of the halo, giving an asymmetric appearance.

NASA SkyView Photo



Tapping on the previous photo reveals a false color version.

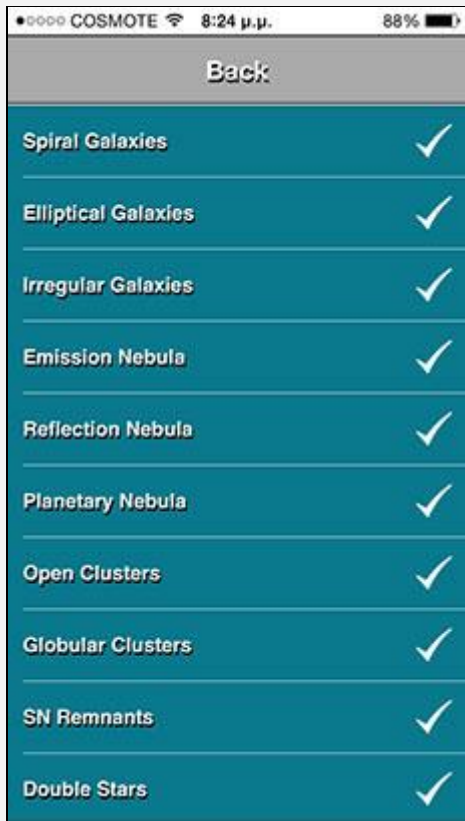


By tapping on the “Neighbors” button at the top right of the selected object screen, the user is presented with a new screen to aid in getting an idea of the closest targets around the currently viewed object.

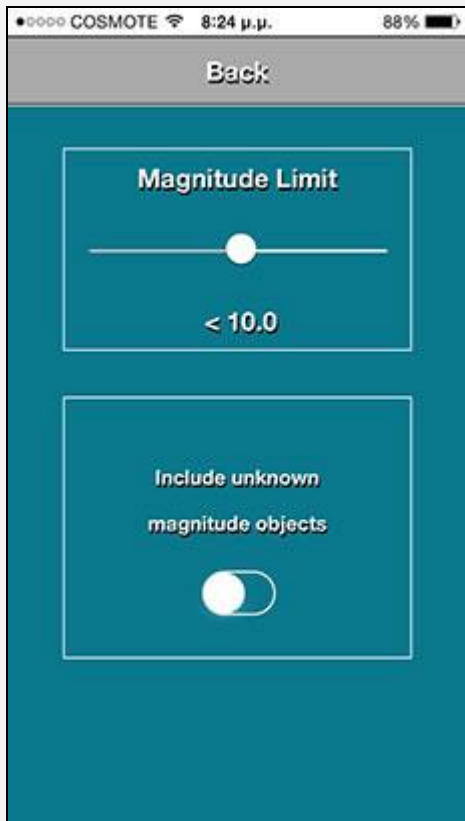


If the user pans down from the name of the selected object (i.e. NGC 6124) then, a growing orange area is shown together with the number of objects found at the displayed radius from the object.

The list at right is updated with all objects lying inside the radius shown.



This list enables filtering “neighboring” objects based on object type.
(To view this screen tap on the easel icon in the toolbar of the “Neighbors” screen).



“Neighboring” objects can also be filtered by magnitude.
(To view this screen tap on the tool icon in the toolbar of the “Neighbors” screen).

Back		Neighbours	
Object Data			
NGC - 6000		Scorpius	
α : 15h49m49s		δ : -29°23'13"	
Mag: 11.9		Size: 1.90'x1.60'	
Surf. Br: 12.9		P.A:154°	
Galaxy		Type: SBbc	
BV Mag: 0.8		Z: 0.01 (30.89 Mpc)	
B-mag: 12.7		PGC: 56145	
Observing Notes - (by S. Gottlieb)			
NGC - 6000		1/1	
<p>17.5 (4/7/89): fairly faint, small, very elongated NNW-SSE. A mag 13 star is 1' NW. Located 3.4' NE of mag 9 SAO 183830. This galaxy is the brightest of the very few in Scorpius.</p>			

App Settings allow use of the app in Night Mode as well as to toggle sounds on/off.

justObserve



COPYRIGHT (C) 2016 PINDUSSOFT.COM